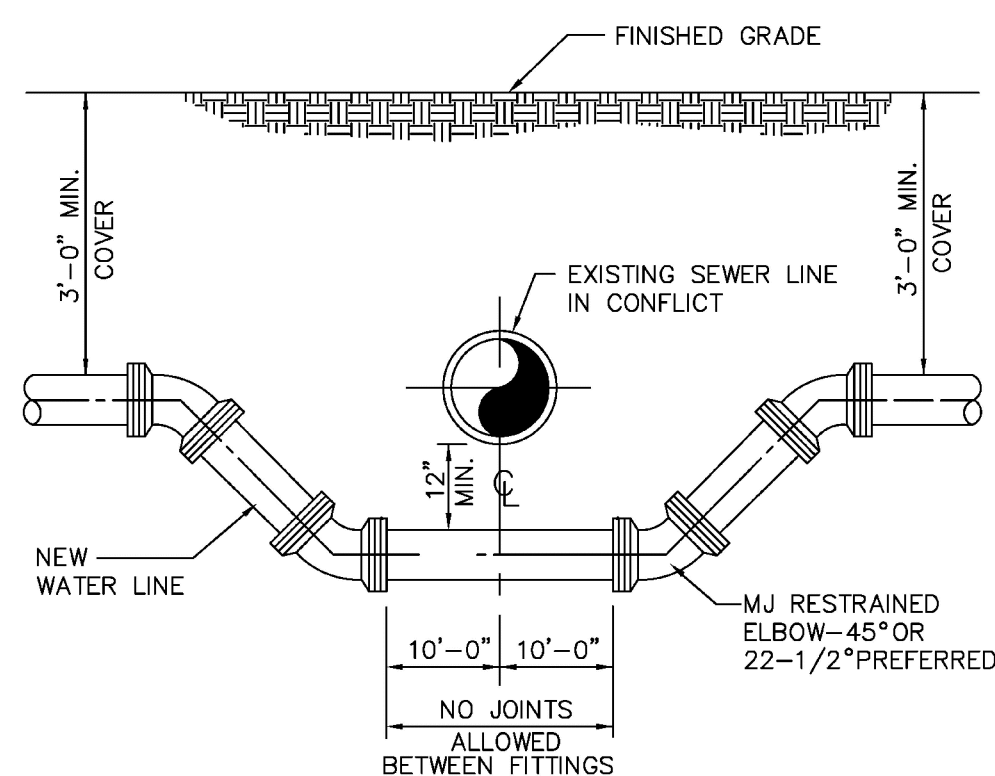


### TYPICAL 1 1/2" AND 2" WATER SERVICE

ENGINEERING STANDARDS 2025				
REVISIONS		ENGINEERING DIVISION CITY OF POMPANO BEACH	TYPICAL 2" WATER SERVICE	
BY	DATE		<div></div> <div>DATE: APRIL 2022 DWG. NO. 107-2</div>	
S.S.	05-2011			
S.S.	05-2012			
S.S.	11-2018			
A.S.	08-2021			
SCALE: N.T.S.				

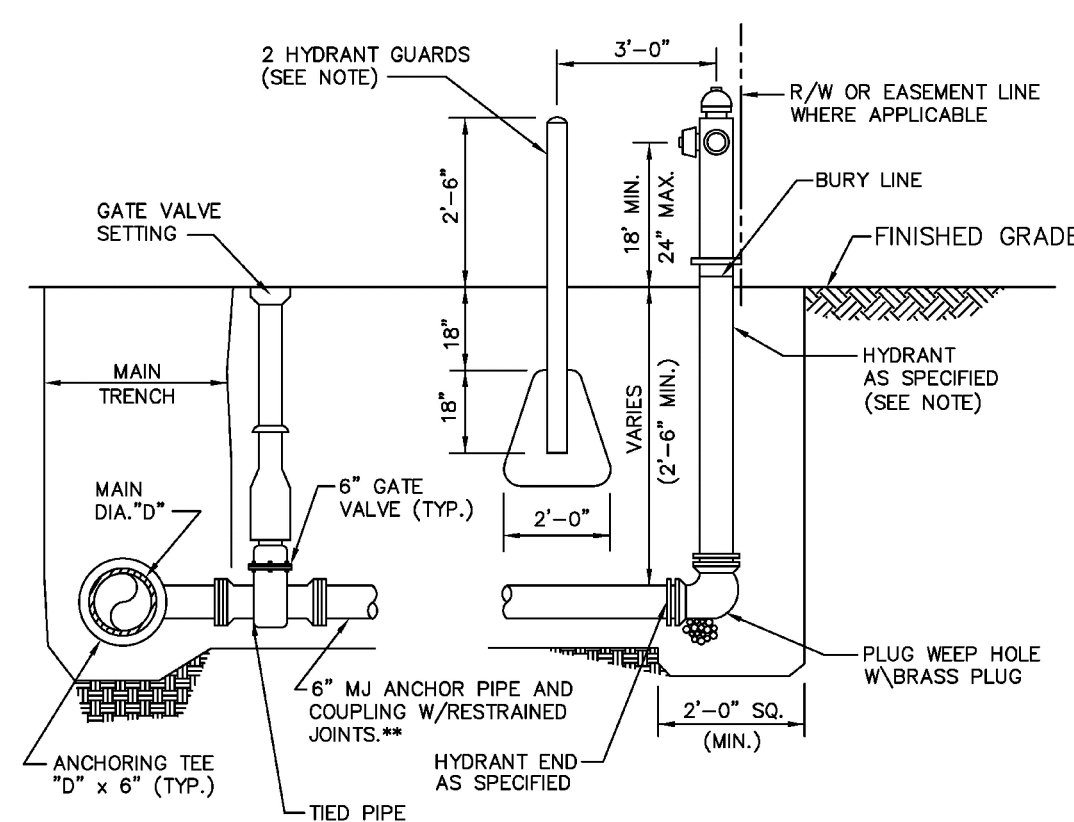


### TYPICAL CONFLICT DETAIL

NOTES  
WHERE CONDITIONS PERMIT, PIPE DEFLECTION MAY BE USED  
INSTEAD OF BENDS TO OBTAIN THE MINIMUM CLEARANCE.  
FACTORY OFFSETS MAY BE USED.

USE MEGALUGS AT ALL PIPE JOINTS

ENGINEERING STANDARDS 2025			
REVISONS		ENGINEERING DIVISION CITY OF POMPANO BEACH	TYPICAL CONFLICT (WATER)
BY	DATE		
S.S.	04-2005		
S.S.	01-2012		
SCALE: N.T.S.			DATE: MAY 2022 DWG. NO. 108-1



## TYPICAL FIRE HYDRANT ASSEMBLY

NOTES

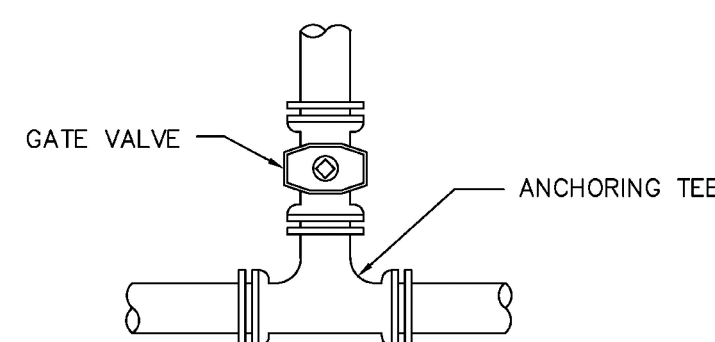
HYDRANT GUARDS TO BE 6" DIAMETER GALVANIZED STEEL PIPE PAINTED YELLOW  
FILLED WITH CONCRETE. OMIT GUARDS IN LOCATIONS WHERE SIDEWALKS EXIST.

\*USE 2-3/4" S.S. TIE RODS WHEN DISTANCE BETWEEN MAIN AND HYDRANT < 10'. TIE RODS WILL BE USED W/RESTRAINED JOINTS OR USE MEGALUGS AT ALL PIPE JOINTS

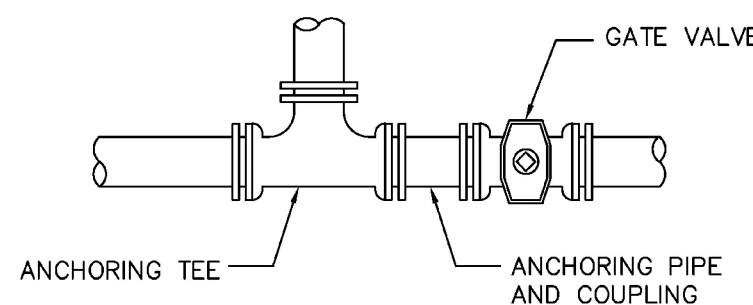
HYDRANTS CONNECTED TO NEW MAINS SHALL BE CONNECTED USING A HYDRANT TEE.

ALL POMPANO BEACH HYDRANTS SHALL BE PAINTED RED.

ENGINEERING STANDARDS 2025			
REVISIONS		ENGINEERING DIVISION CITY OF POMPANO BEACH	FIRE HYDRANT ASSEMBLY
BY	DATE		
T.W.	11-2007		
T.W.	10-2010		
S.S.	2-2012		
S.S.	11-2012		
SCALE: N.T.S.		DATE: MAY 2022 DWG. NO. 109-1	



### RESTRAINED VALVE AT TEE ( BRANCH )

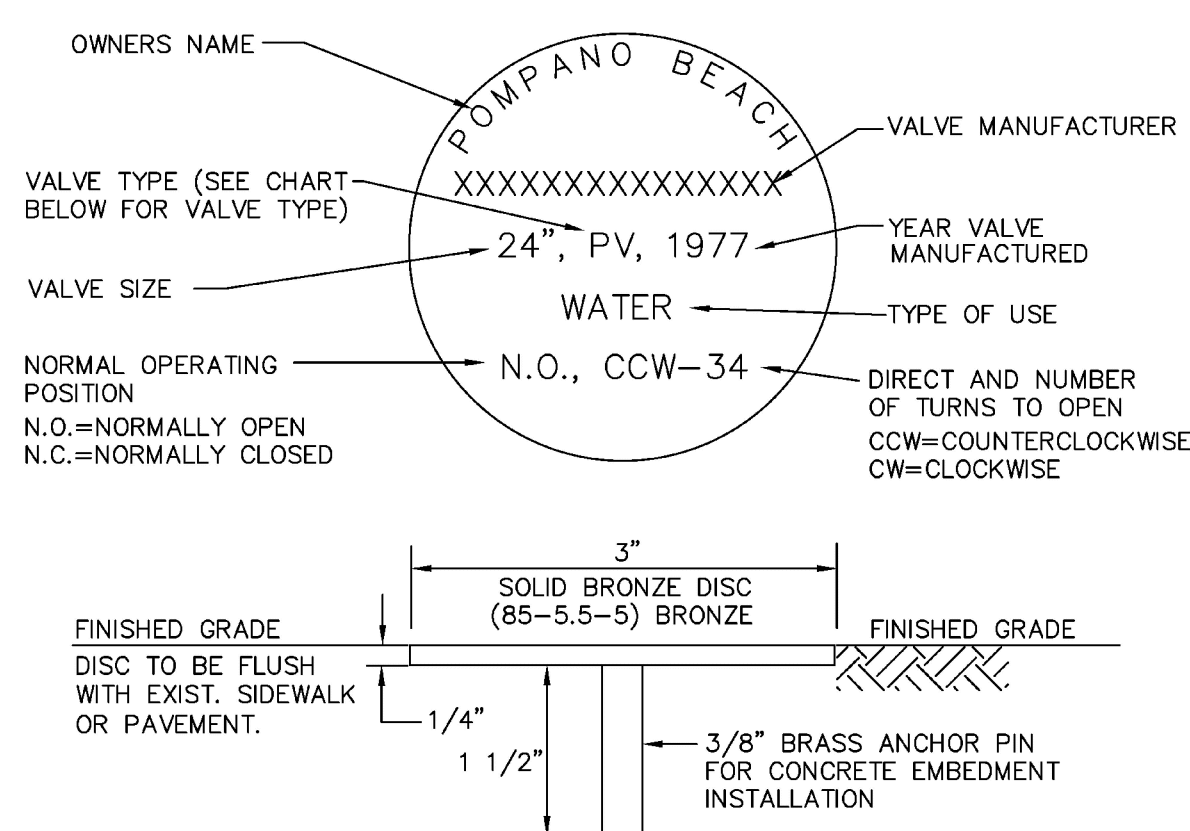


RESTRAINED VALVE AT TEE  
( IN LINE )

USE MEGALUGS AT ALL PIPE JOINTS

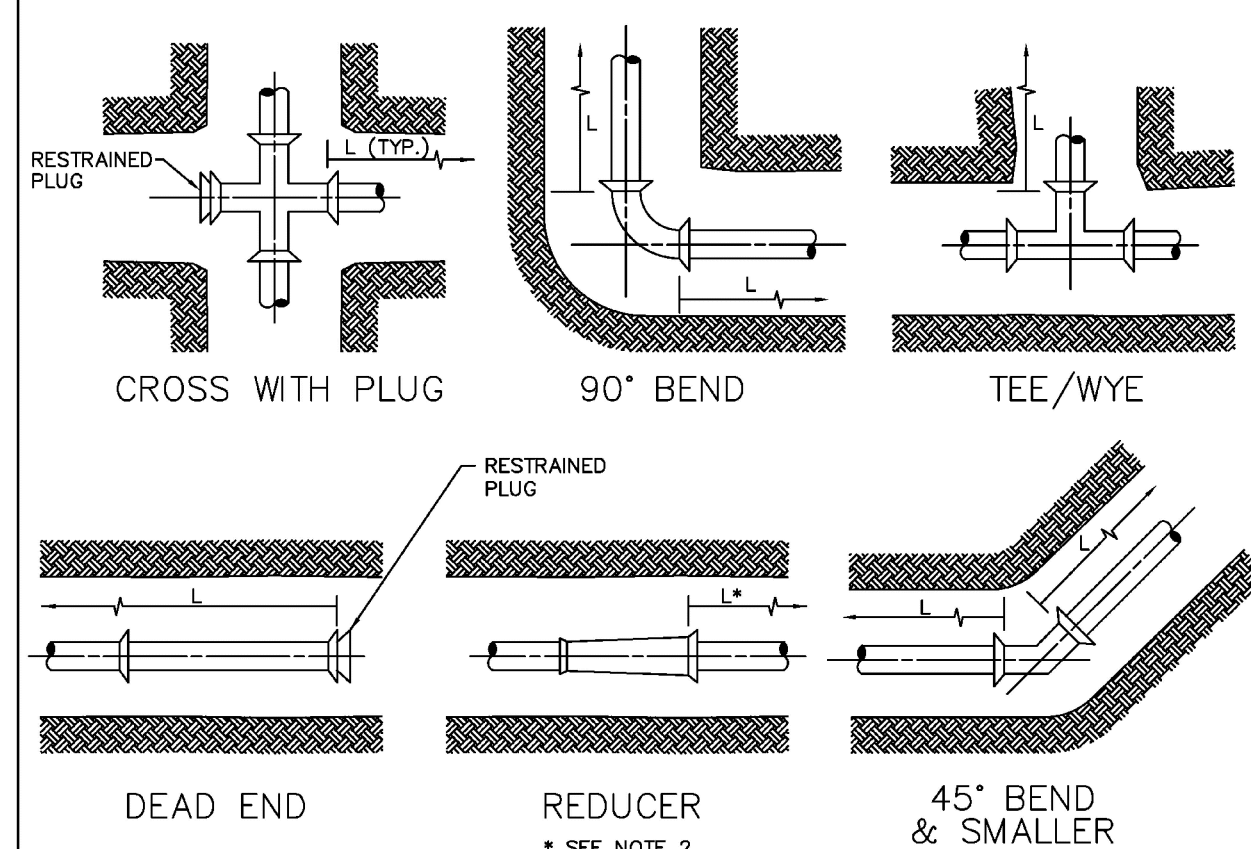
ALL D.I.P. TO BE PAINTED BLUE  
ON THE TOP HALF OF PIPE.

ENGINEERING STANDARDS 2025			
REVISONS		ENGINEERING DIVISION CITY OF POMPANO BEACH	RESTRAINED VALVE AT TEE
BY	DATE		
S.S.	JUNE 2005		DATE: MAY 2022 DWG. NO.
		SCALE: N.T.S.	111-1



# UNDERGROUND VALVE IDENTIFICATION MARKER

ENGINEERING STANDARDS 2025			
REVISONS		ENGINEERING DIVISION CITY OF POMPANO BEACH	UNDERGROUND VALVE IDENTIFICATION MARKER
BY	DATE		
S.S.	JUNE 2005		
T.W.	11-2007		
T.W.	02-2008		
S.S.	1-24-12	SCALE: N.T.S.	DATE: FEB. 2022 DWG. NO.
			115-1

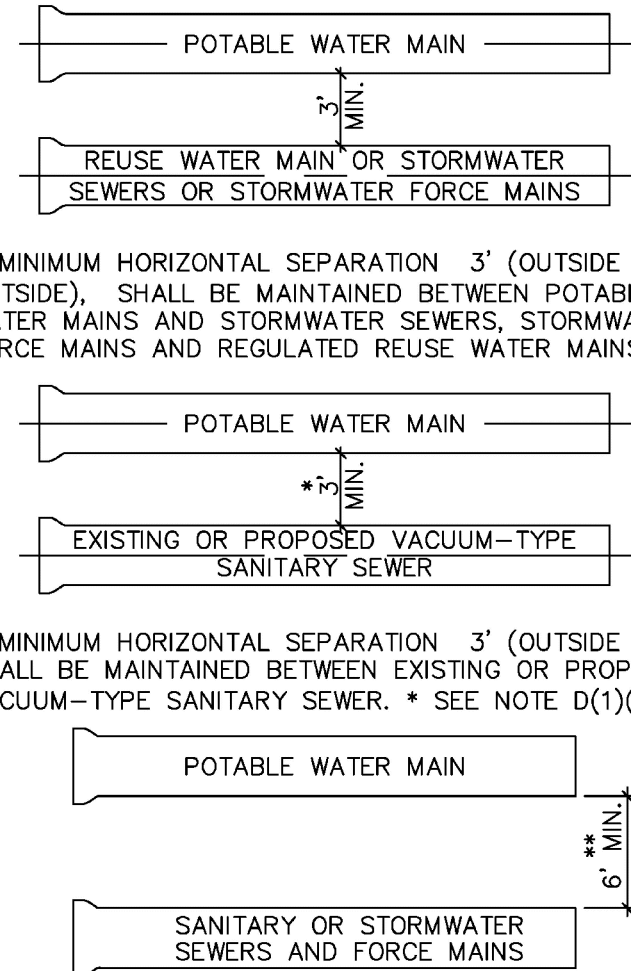


NOTES:

1. VALUES IN TABLE ARE BASED ON 3" OF COVER, 100 PSI INTERNAL PRESSURE, FOR FORCE MAINS, 150 PSI REUSE WATER LINES, ANS/AWWA C605 & C150/A21.50 LAYING CONDITION 3, ASTM D4247, SDR 35.5, 150 PSI, 150 TO 200' PER JOINT. RESTRAINED LENGTHS WERE COMPUTED PER DIPRA "THRUST RESTRAINT DESIGN FOR DUCTILE IRON PIPE" AND "PVC PIPE THRUST RESTRAINT DESIGN HANDBOOK" (LEAKAGE = 0.00001).
2. CONFIRM THE EXACT LENGTH OF RESTRAINING REQUIRED FOR REDUCERS, PIPE ENCASED IN POLYETHYLENE AND ENCASTRING RESTRAINED LENGTHS WITH THE DESIGN ENGINEER.
3. THE CONTRACTOR IS RESPONSIBLE FOR PROPER INSTALLATION OF THE RESTRAINED JOINTS TO PREVENT MOVEMENT OF THE PIPE & FITTINGS.
  - a. IN THE EVENT OF A CONFLICT BETWEEN RESTRAINED LENGTHS SHOWN SUBMITTALS AND THE LONGEST RESTRAINED LENGTHS ON THE DRAWINGS, THE LONGEST RESTRAINED LENGTH SHALL BE USED.

### RESTRAINED JOINT INFORMATION

ENGINEERING STANDARDS 2025			
REVISIONS		ENGINEERING DIVISION CITY OF POMPANO BEACH	RESTRAINED JOINT INFORMATION
BY	DATE		
SCALE: N.T.S.		DATE: MAY 2022 DWG. NO.	118-1



## MINIMUM HORIZONTAL SEPARATION REQUIREMENTS FOR POTABLE WATER, REUSE, STORMWATER AND SEWER LINES

ENGINEERING STANDARDS 2025			
REVISIONS BY DATE S.S. 01/12		ENGINEERING DIVISION CITY OF POMPAÑO BEACH	MIN. HORIZONTAL SEPARATION FOR POTABLE WATER  DATE: JAN. 2022 DWG. NO. 121-1
		SCALE: N.T.S.	

[illegible]

DESIGN	DESIGN
DELIVERABLE:	DEVELOPMENT
ISSUE DATE:	11/12/2025

PROJECT NUMBER: 2024-0559.0000  
KEITH: 10647.01

CHECKED BY: MP

Copyright (c) by SYNALOVSKI ROMANIK SAYE, LLC  
All Rights Reserved.

SHEET TITLE:

## WATER AND SEWER DETAILS